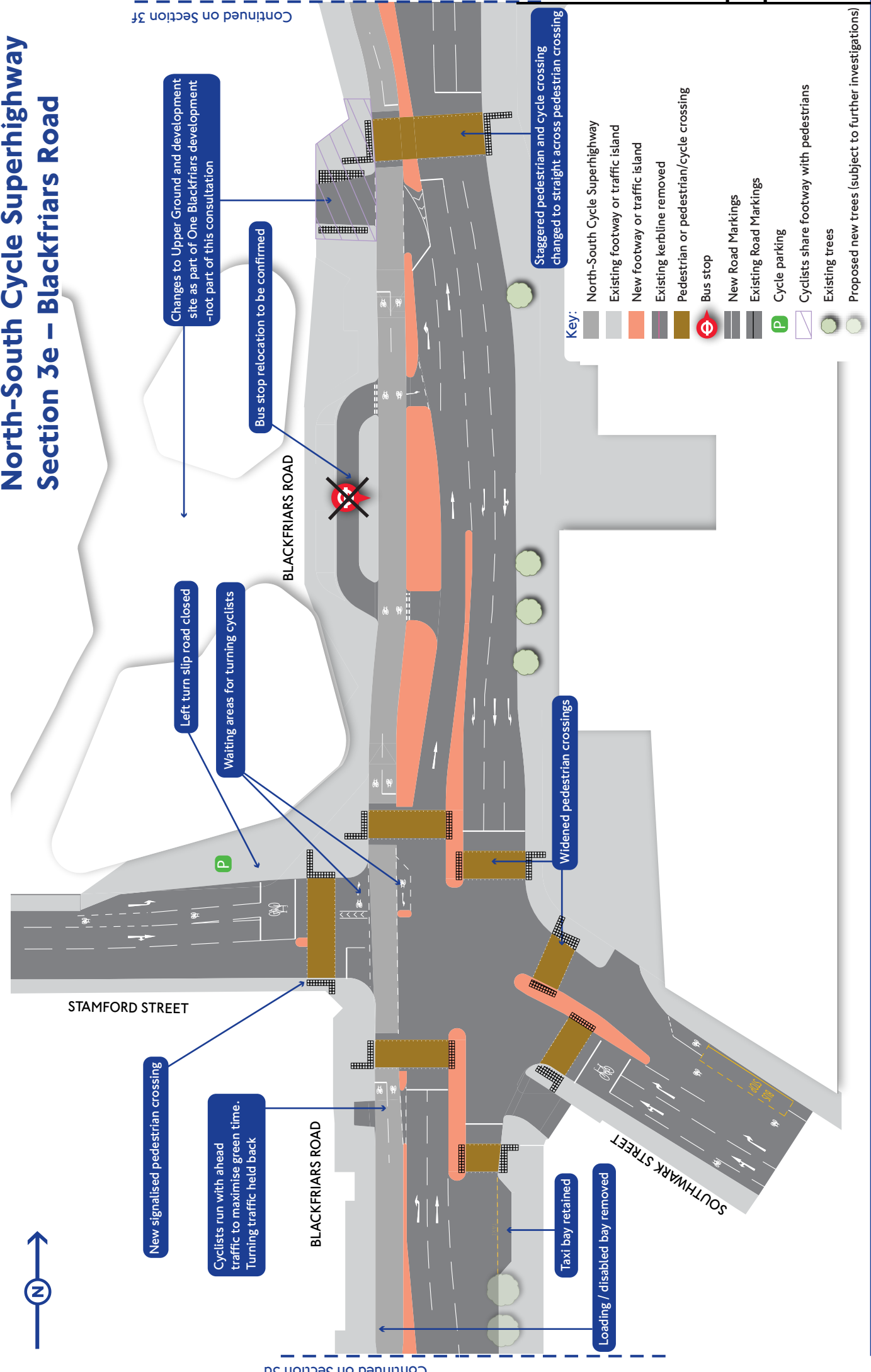


North-South Cycle Superhighway Section 3e – Blackfriars Road



Continued on Section 3f

Continued on Section 3d

New signalised pedestrian crossing

Cyclists run with ahead traffic to maximise green time. Turning traffic held back

Left turn slip road closed

Waiting areas for turning cyclists

Bus stop relocation to be confirmed

Changes to Upper Ground and development site as part of One Blackfriars development -not part of this consultation

Loading / disabled bay removed

Taxi bay retained

Widened pedestrian crossings

Staggered pedestrian and cycle crossing changed to straight across pedestrian crossing

Key:

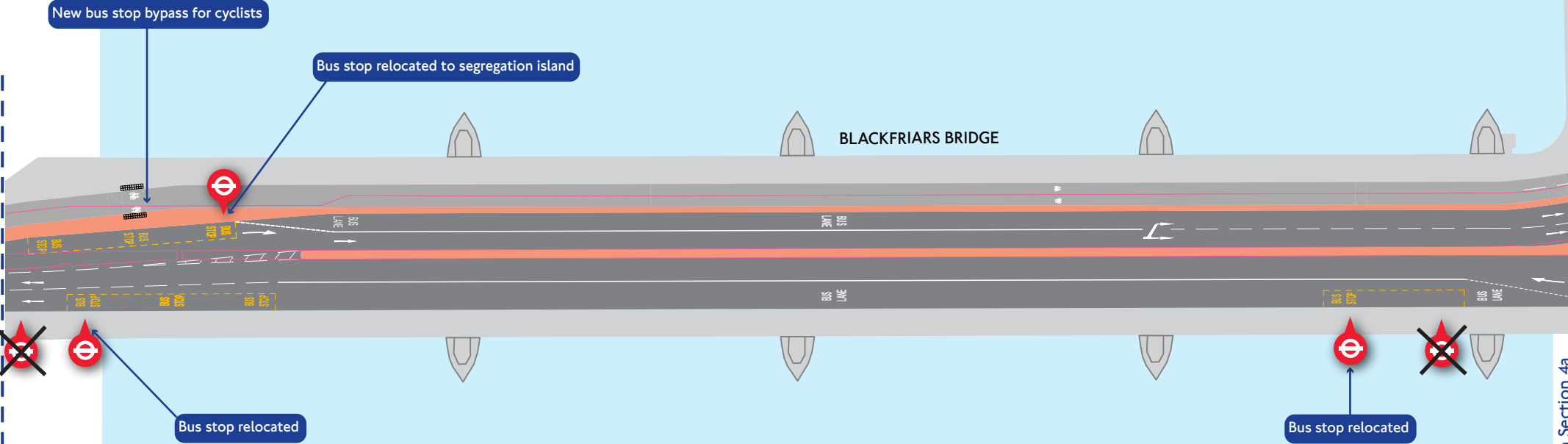
- North-South Cycle Superhighway
- Existing footway or traffic island
- New footway or traffic island
- Existing kerbline removed
- Pedestrian or pedestrian/cycle crossing
- Bus stop
- New Road Markings
- Existing Road Markings
- P Cycle parking
- Cyclists share footway with pedestrians
- Existing trees
- Proposed new trees (subject to further investigations)



North-South Cycle Superhighway Section 3f – Blackfriars Bridge



Continued on Section 3e



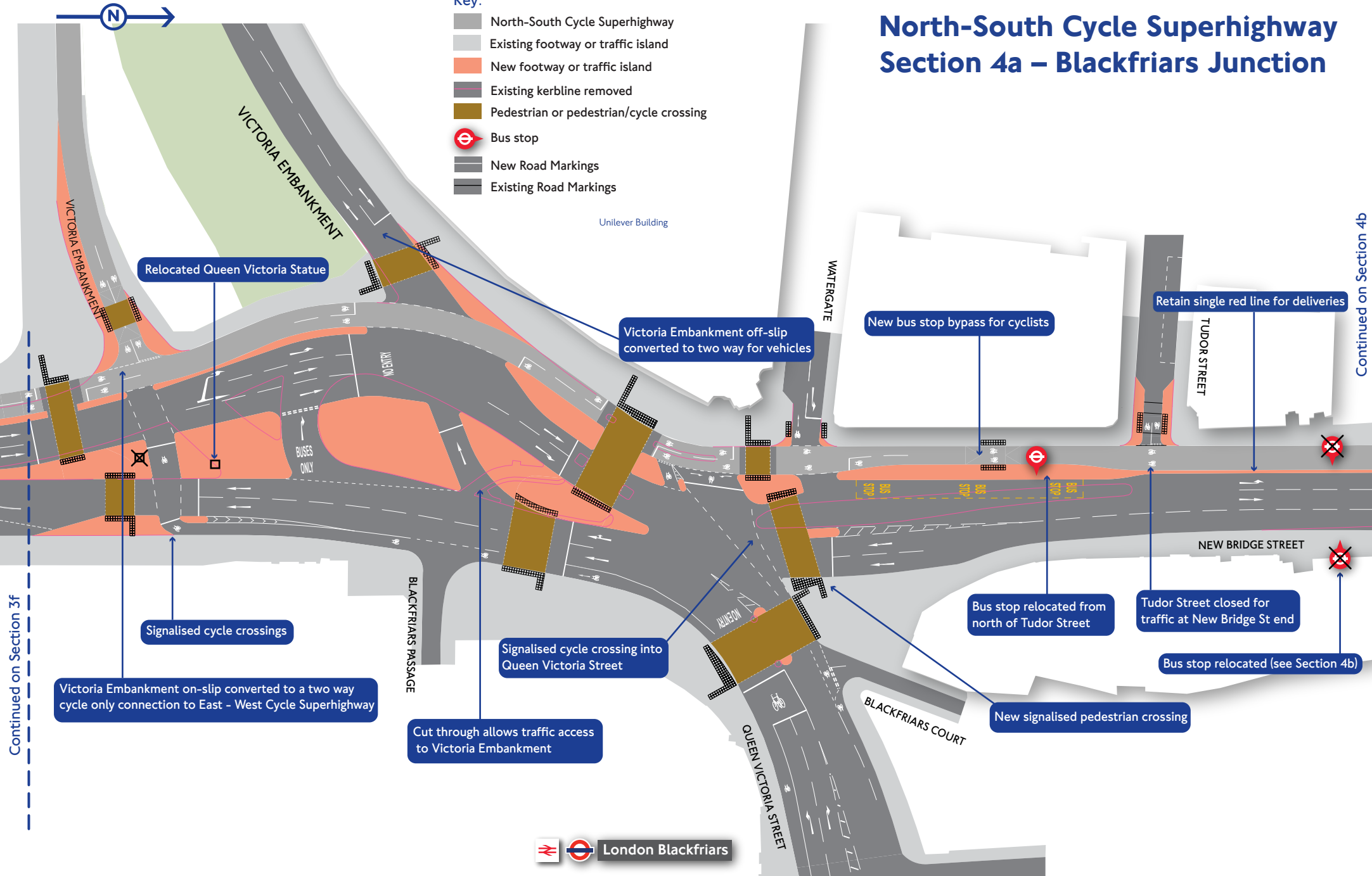
Continued on Section 4a

Key:

- North-South Cycle Superhighway
- Existing footway or traffic island
- New footway or traffic island
- Existing kerblines removed
- Pedestrian or pedestrian/cycle crossing
- Bus stop
- New Road Markings
- Existing Road Markings

North-South Cycle Superhighway Section 4a – Blackfriars Junction

- Key:**
- North-South Cycle Superhighway
 - Existing footway or traffic island
 - New footway or traffic island
 - Existing kerbline removed
 - Pedestrian or pedestrian/cycle crossing
 - Bus stop
 - New Road Markings
 - Existing Road Markings



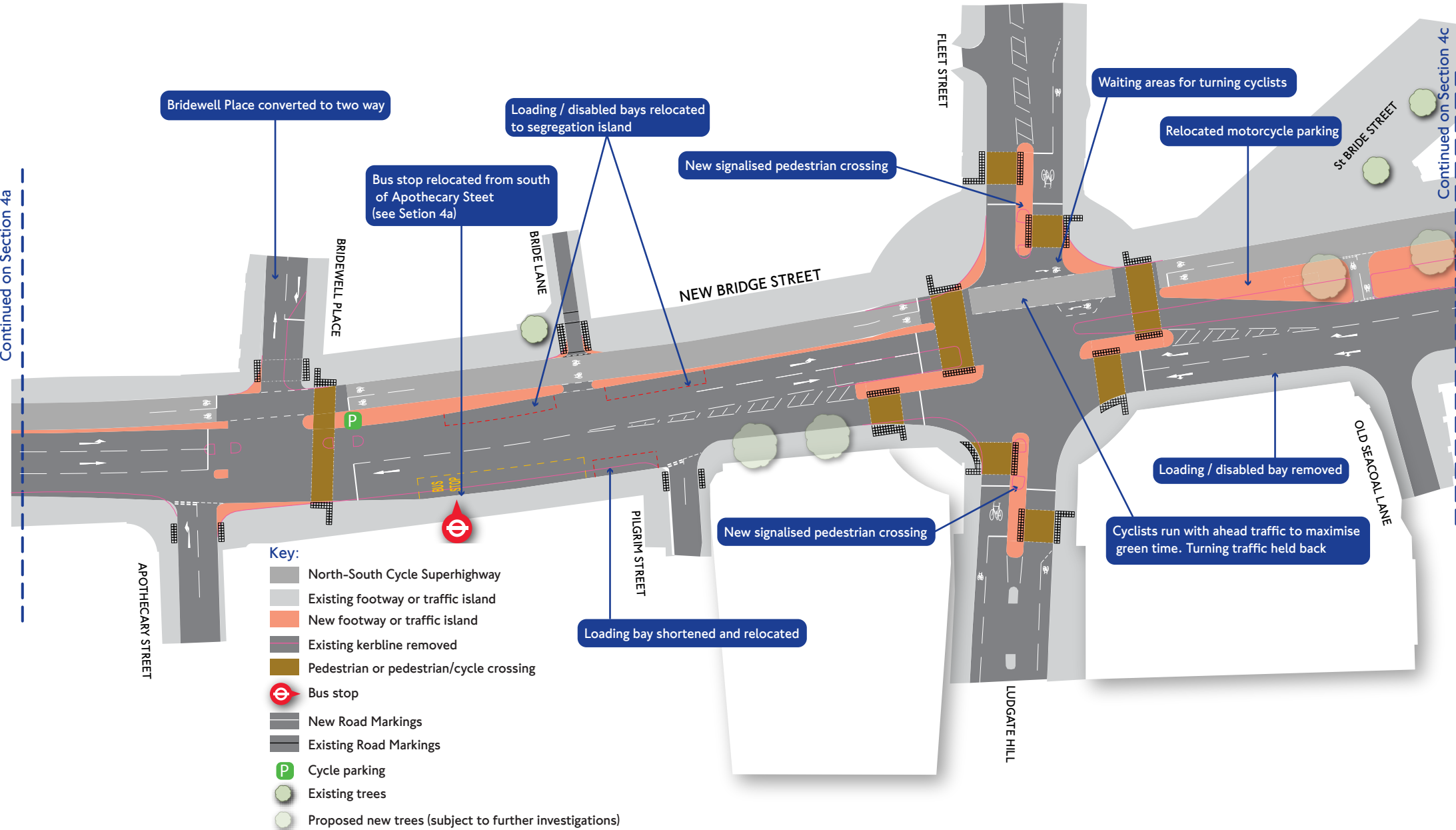
Continued on Section 3f

Continued on Section 4b

London Blackfriars

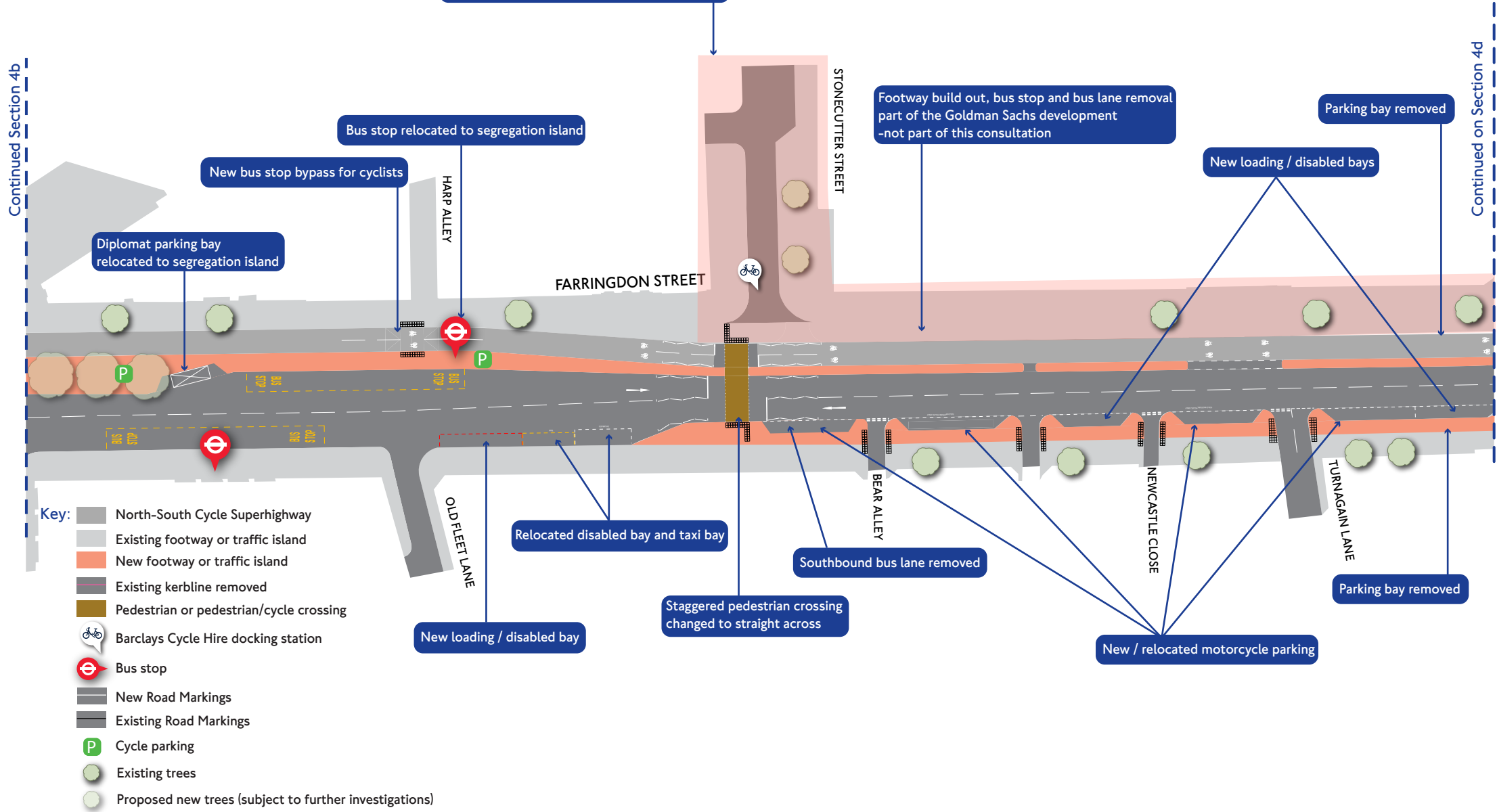


North-South Cycle Superhighway Section 4b – New Bridge Street





North-South Cycle Superhighway Section 4c – Farringdon Street

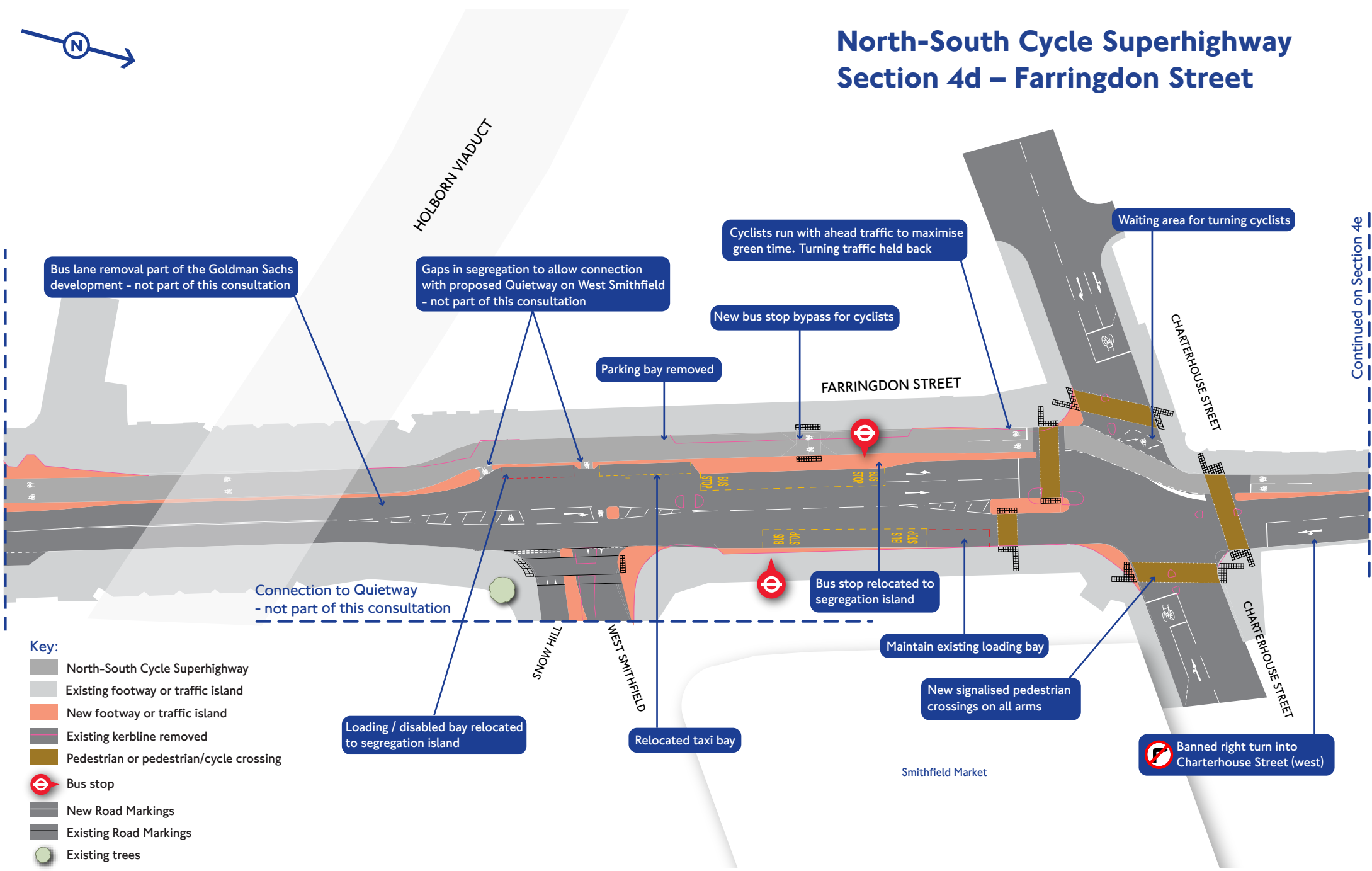


North-South Cycle Superhighway Section 4d – Farringdon Street



Continued on Section 4c

Continued on Section 4e

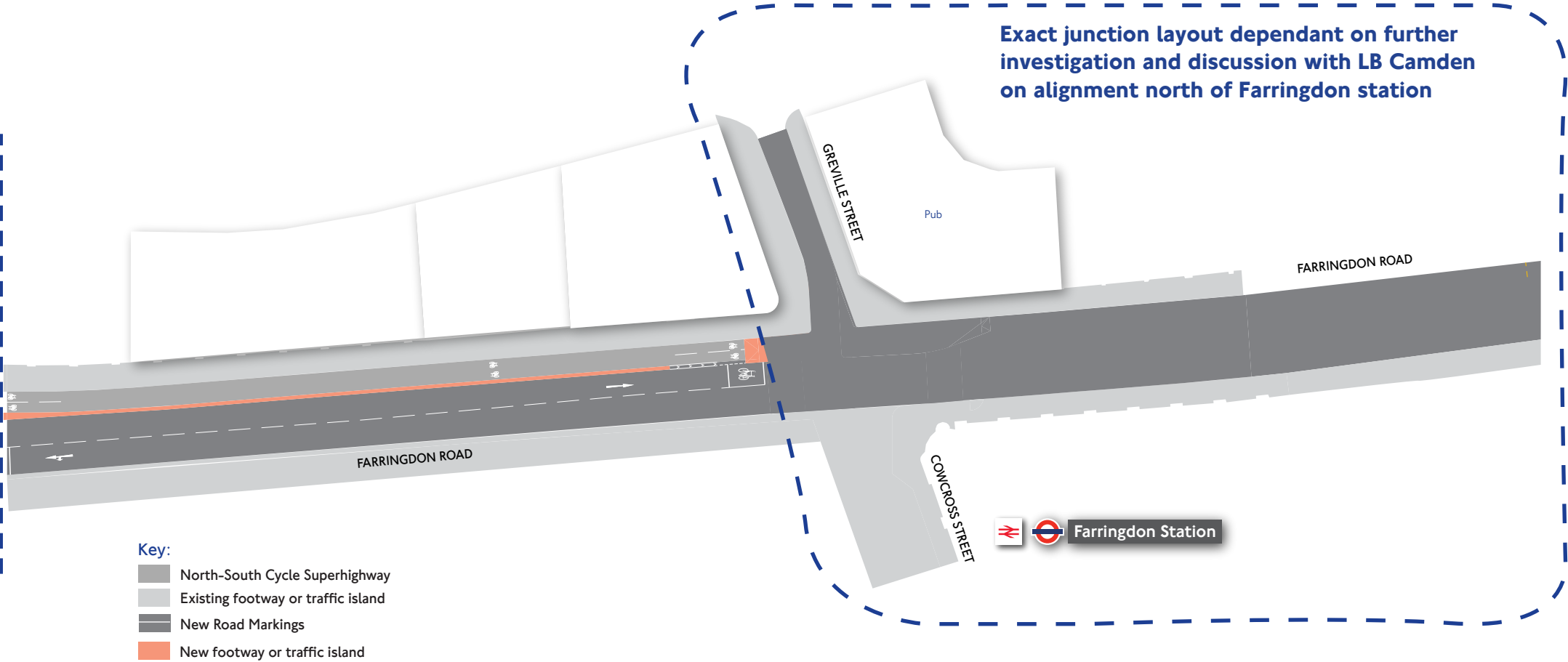


- Key:**
- North-South Cycle Superhighway
 - Existing footway or traffic island
 - New footway or traffic island
 - Existing kerblines removed
 - Pedestrian or pedestrian/cycle crossing
 - Bus stop
 - New Road Markings
 - Existing Road Markings
 - Existing trees



North-South Cycle Superhighway Section 4e – Farringdon Road

Continued on Section 4d

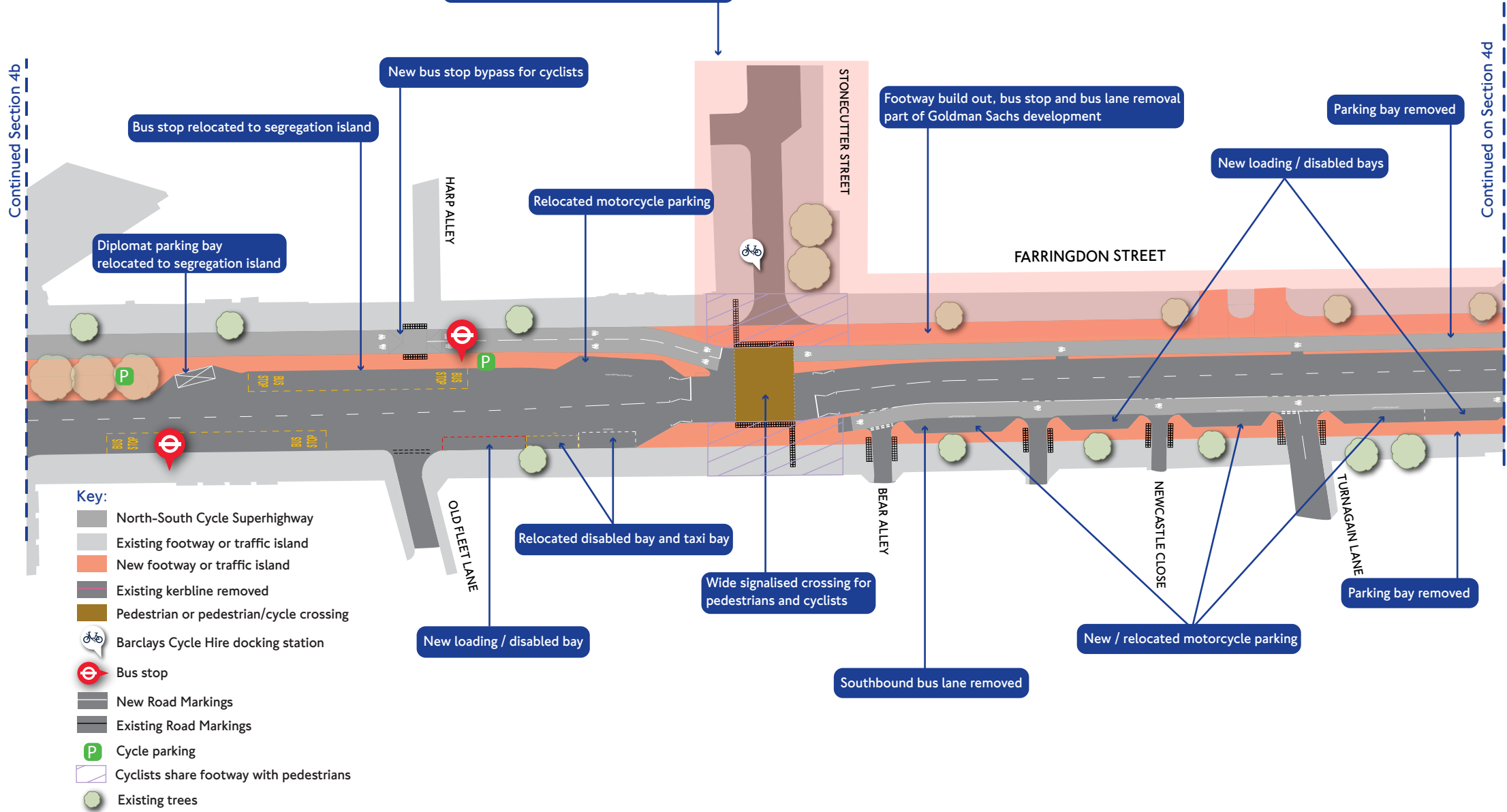


Key:

- North-South Cycle Superhighway
- Existing footway or traffic island
- New Road Markings
- New footway or traffic island



North-South Cycle Superhighway Section 4c – Farringdon Street



North-South Cycle Superhighway Section 4d – Farringdon Street



Continued on Section 4c

Continued on Section 4e

Bus lane removal part of the Goldman Sachs development - not part of this consultation

Gaps in segregation to allow connection with Quietway on West Smithfield - not part of this consultation

Cyclists run with ahead traffic to maximise green time. Turning traffic held back

Waiting area for right turning cyclists

Parking bay removed

New bus stop bypass for cyclists

Bus stop relocated to segregation island

FARRINGDON STREET

CHARTERHOUSE STREET

Connection to proposed Quietway - not part of this consultation

Loading / disabled bay relocated to segregation island

Relocated taxi bay

New bus stop bypass for cyclists

Loading bay removed

Waiting area for right turning cyclists

- Key:**
- North-South Cycle Superhighway
 - Existing footway or traffic island
 - New footway or traffic island
 - Existing kerblines removed
 - Pedestrian or pedestrian/cycle crossing
 - Bus stop
 - New Road Markings
 - Existing Road Markings
 - Existing trees

SNOW HILL

WEST SMITHFIELD

Smithfield Market

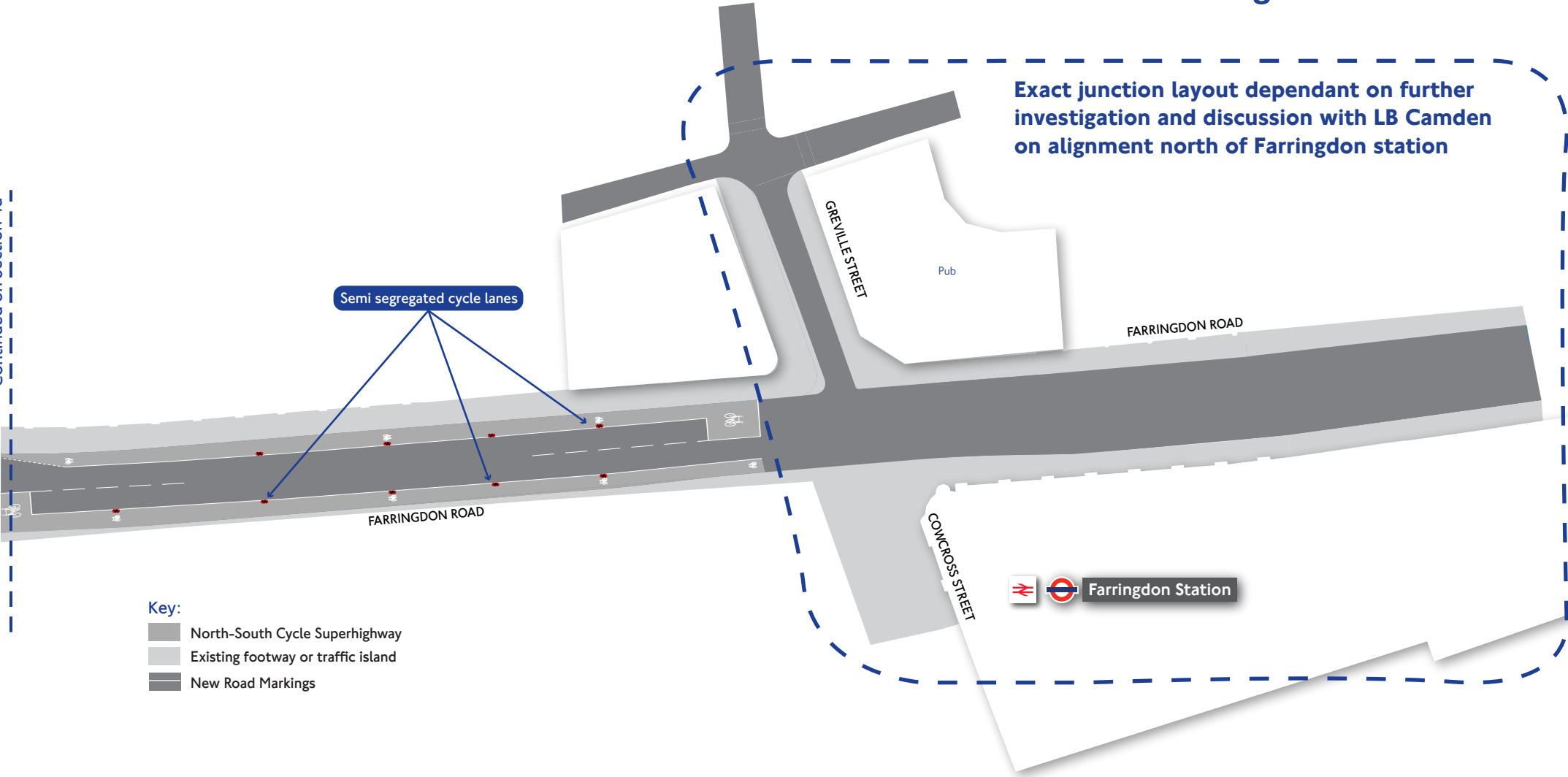
New signalised pedestrian crossings on all arms

CHARTERHOUSE STREET



North-South Cycle Superhighway Section 4e – Farringdon Road

Continued on Section 4d



- Key:**
- North-South Cycle Superhighway
 - Existing footway or traffic island
 - New Road Markings